

Matchcode Batch

Superior performance

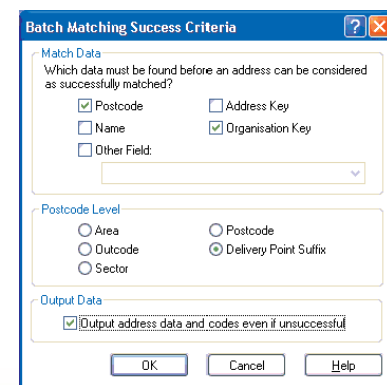
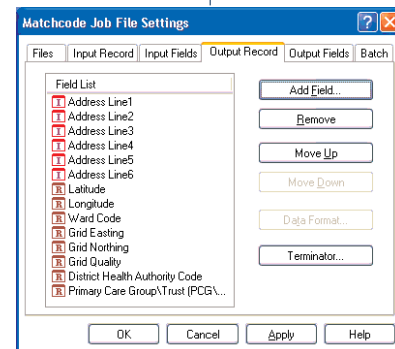
Matchcode Batch for Windows is a simple-to-use 'Wizard' driven application for bulk postcoding or cleaning of address data against the Royal Mail Postcode Address File (PAF). It offers unrivalled speed and accuracy when cleaning address data and can typically produce match rates of 90% or more on a first run, and process up to a million records per hour depending on the hardware platform.

Additional data sets enhancements

A number of additional data sets are available for Matchcode Batch to enhance addresses including Grid References, National Canvase Names and Commercial data. For example, National Canvase data can be used to confirm names at certain addresses as well as using the name to complete a partial address from limited information. Similarly, Commercial data of over 1.5 million organisations can be used to increase address match rate, validate company names, and enhance data with telephone numbers and SIC codes.

A wide range of overlays are available from Capscan. Matchcode Batch currently supports the following additional data sets:

- Standard Industry Classification (SIC) Codes
- Commercial Data (from Dun & Bradstreet)
- National Canvase Data
- Grid References
- Ordnance Survey Address-Point™
- Ordnance Survey CodePoint™
- Nearest Facility
- Local Authority Ward Codes
- LEA Codes
- Parliamentary Constituency and MP Name
- European Constituency and MEP Name
- DHA Codes
- PCG and PCT Codes
- Mosaic™
- STD Codes



Matchcode Batch can provide bulk postcoding or cleaning of address data via a simple-to-use Wizard.

For further information on our full range of products and services, please call Capscan on:
020 7428 1255

Alternatively please visit our website at:
www.capscan.com

or email:
enquiries@capscan.com

Matchcode Batch

FEATURES AND BENEFITS

Matchcode Batch:

- Allows you to bulk postcode or cleanse large quantities of address data.
- Allows manual processing of any suspect address records following an automatic batch run, to maximise the success rate.
- Adds missing address information to ensure address accuracy.
- Corrects misspelt address elements to promote database quality and improve customer perception.
- Works from partial address to return a full address.
- Validates input address against Royal Mail's PAF file for discounts and effective delivery.
- Flexible formatting of information for database compatibility and export.
- Allows enhancement of addresses with additional information including Grid References, NHS codes, Local Authority Ward Codes and Lifestyle data etc.
- Includes comprehensive reporting tools.
- Fast, accurate and flexible.
- Supports multiple databases.
- 'New for old' postcodes facility.
- Allows you to add Royal Mail Barcodes to addresses to maximise Mailsort discounts.

TECHNICAL FEATURES

- Available as an 'off-the-shelf' application for Windows NT, 2000, 2003, XP and Vista.
- Data is updated on a quarterly basis with periodic updates of the software included in the annual licence.



"We selected Matchcode from a shortlist of competing products because we needed an addressing solution that could provide us with superior performance and complete control."

MarketingFile.com

For further information on our full range of products and services, please call Capscan on:

020 7428 1255

Alternatively please visit our website at:

www.capscan.com

or email:

enquiries@capscan.com